

PURPOSE-BUILT MINING EQUIPMENT



As a critical component of underground mining operations, **GETMAN SCISSOR LIFTS** provide reliable production support across multiple applications, including electrical installations, ventilation and fan systems, and ground support operations.

Getman's A64 SL offers a safe operator working height up to 6.2 m (20 ft) with a capacity of up to 4,536 kg (10,000lb), and comes equipped with platform access

from a lowered position that allows for safe entry and egress.

A64 scissor lifts protect miner safety through purpose-built design, including a fully stabilized non-skid platform and fall arrest anchor points located throughout the basket for quick and easy tie off. The lifting structure is compliant with all relevant ANSI, CSA and AS standards.



TECHNICAL SPECIFICATIONS

ENGINE

- Stage V/ T4F Approved Cummins B 4.5 - 129kW (173 hp)
- Tier III approved engine (4 cylinder)
 - › Cummins QSB4.5, 127kW (170hp)
- Liquid-cooled, turbocharged
- 113 L (30 gal) fuel tank with self-closing cap
- Ansul LVS FSS, tied to engine shutdown

EXHAUST SYSTEM

- Exhaust after-treatment

TRANSMISSION

- Dana Clark powershift transmission
- Three speeds forward and reverse
- 4-wheel drive

AXLES

- Planetary drive axles
 - › Kessler S41 axle package
 - › Optional Kessler S72 higher capacity axle package

TIRES

- Mine service tires
 - › 10.00x20
 - › 12.00x20

BRAKE SYSTEM

- Service brakes are spring-applied, hydraulic-released, liquid-cooled multi-disc brakes on all wheels.
- Automatic brake application (ABA) occurs upon fire suppression activation or loss of hydraulic accumulator pressure, transmission pressure or electrical power

STEERING

- Orbitrol controlled articulated frame steering
- Heavy-duty, self-aligning bearings inside replaceable inserts
- Two double-acting steer cylinders with replaceable bushings in cylinder and frame ears

HYDRAULIC SYSTEM

- Hot side/cold side engine layout
- Hydraulic hoses routed to cold side of engine
- Open or closed center hydraulic circuits
- Diagnostic test ports with quick couple fittings for: each axle, service and park brake pressure, and hydraulic pumps
- 10-micron return filter
- 151 L (40 gal) hydraulic reservoir

OPERATOR COMPARTMENT

- Three-point contact for entry and exit
- ROPS/FOPS certified canopy
 - › Open cabin
 - › Enclosed cabin with HVAC
- Operator + passenger seating
- Mechanical suspension operator seat
- Retractable lap seat belts

INSTRUMENTATION

- Engine coolant temperature
- Voltmeter
- Hour Meter
- Tachometer
- Transmission charge pressure
- Transmission oil temperature
- Brake accumulator pressure gauge
- Brake accumulator low-pressure warning
- Park brake applied indicator light
- Audio/visual alert for high engine temperature
- Visual alert for low engine oil pressure
- Transmission hours
- Transmission neutralizer
- Audio/visual alert for low hydraulic tank level
- Visual alert Engine ECM

ELECTRICAL SYSTEM

- 24 V electrical system
- Lockable master switch (isolator)
- Maintenance-free batteries
- LED lighting package (IP69K rated)
- Sealed connectors
- Braided outer jacket harness protection

OTHER GENERAL EQUIPMENT

- Variable audio backup alarm (87-112dBA)
- 2.3 kg (5 lb) fire extinguisher
- Wheel chocks
- Manual actuated Ansul LVS FSS tied to engine shutdown

OPTIONAL EQUIPMENT

- Wiggins fill system
- Brake Cooling Package
- Lincoln auto-lubrication package
- Ansul Checkfire automatic actuation fire suppression system with linear detection loop
- Door and/or seat belt interlock
- SICS (Stabilizer Interlock Control System) package, with load-engagement sensors

*May be shown with optional equipment

SCISSOR LIFT SYSTEM

SCISSOR LIFT SETUP

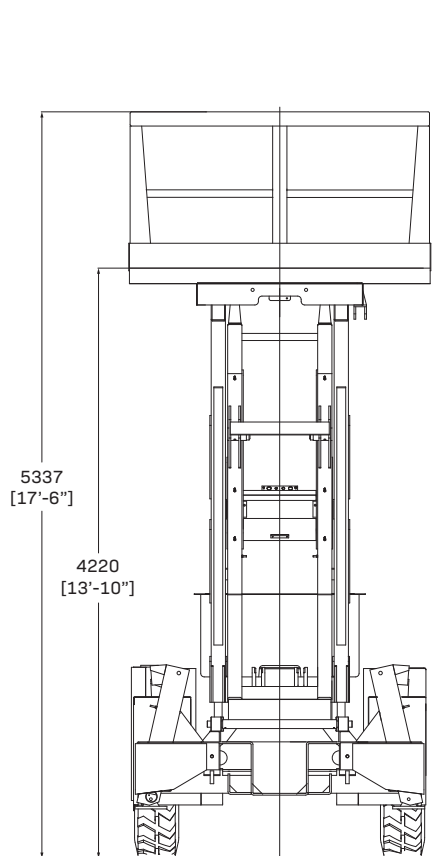
- 2.13 m × 3.35 m (7 ft × 11 ft) platform with non-skid deck
- Safety railing with midrail
- Scissor lift mechanism
 - › 178 mm × 102 mm (7 in × 4 in) arms with 2,500 kg (5,500 lb) platform capacity
- Hydraulic stabilizers with internal pilot check valves
 - › 610 mm (24 in)
 - › 1220 mm (48 in)
- Counterbalance valves on lift cylinders, and emergency lowering pump-off package
- Engine start and engine stop on platform
- Fire suppression actuator on platform
- Electric stabilizer controls in cab on main display
- Dual controls for platform elevation located on platform and in the driver area.

SCISSOR LIFT SETUP - OPTIONS

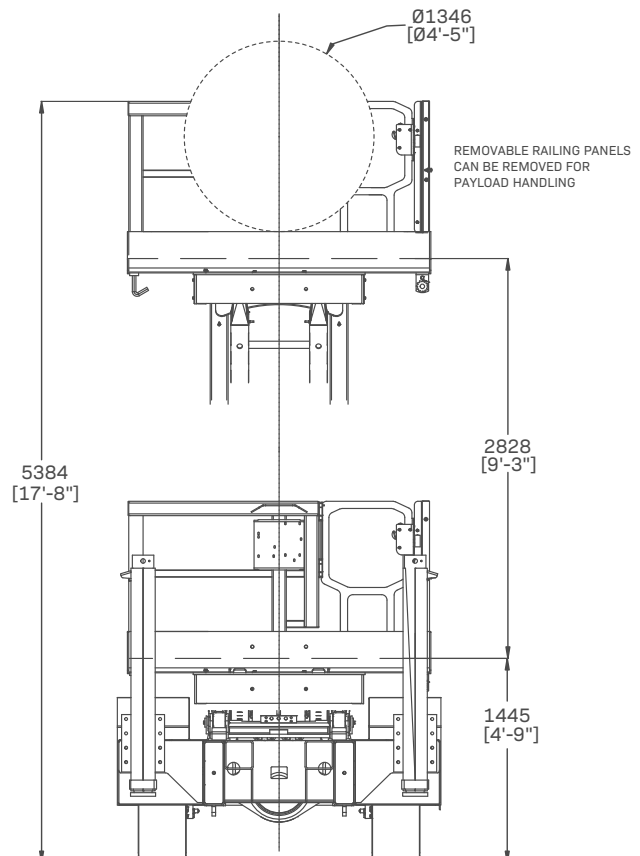
- Scissor lift mechanism (10K Option)
 - › 178 mm × 127 mm (7 in × 5 in) arms with 4,545 kg (10,000 lb) platform capacity
 - › Removable safety railing panels with midrail and self closing access door

SE (SIDE ENTRY) UPGRADE

- 2-door, side entry, cabin
- Optional enclosed pressurized cab with cabin filter
- Forward & side facing swivel driver seat with armrests, mechanical suspension
- Two sets of pedals
- Joystick steering control
- Distributed Control electrical system
- Enhanced interactive display with a large-format screen
- Vehicle performance monitoring with on-screen gauges and diagnostics

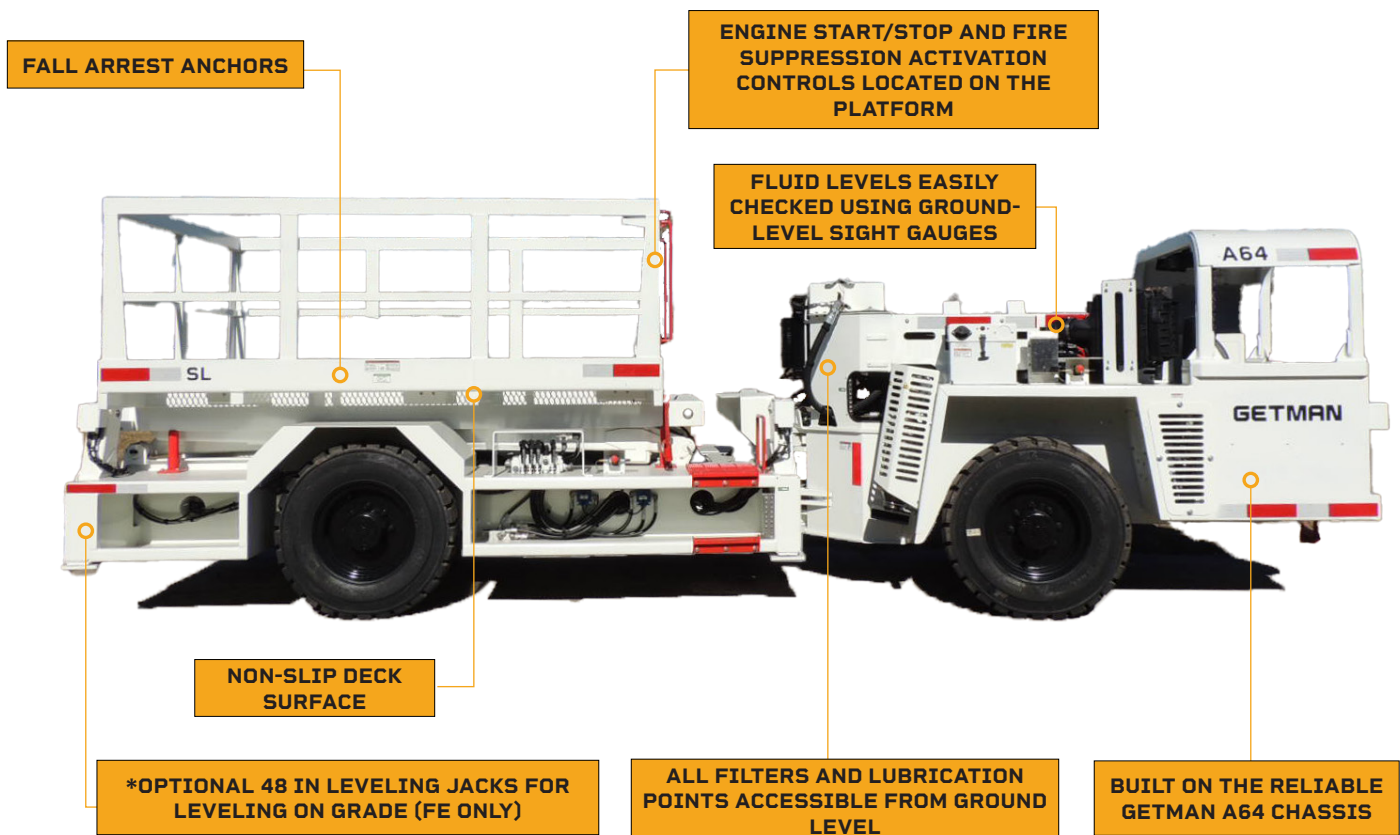


A64 SL



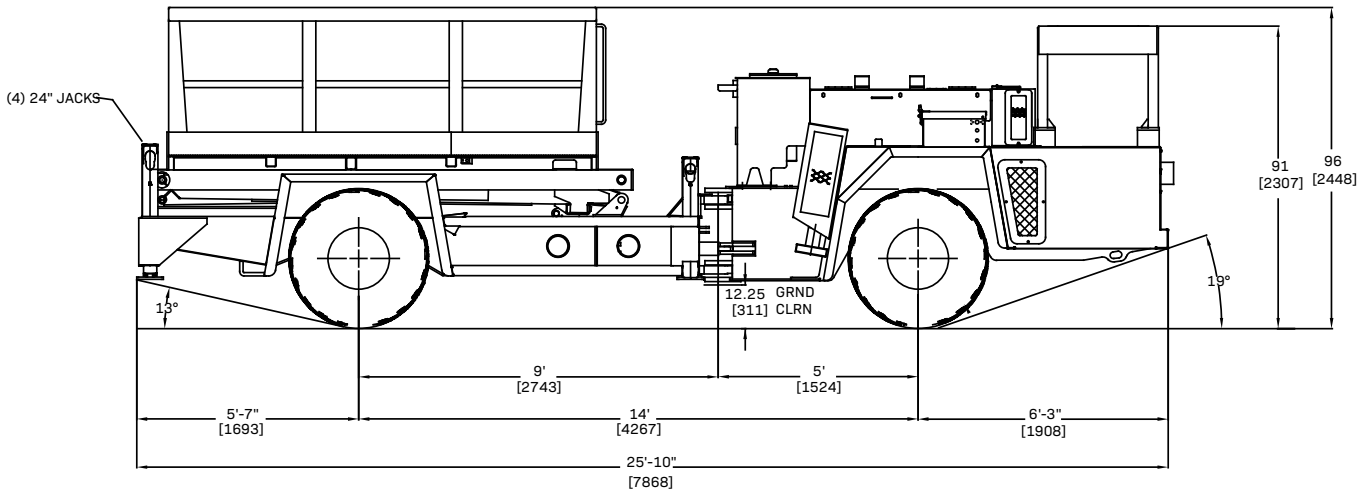
A64 SL 10K

DESIGN FEATURES AND LAYOUT

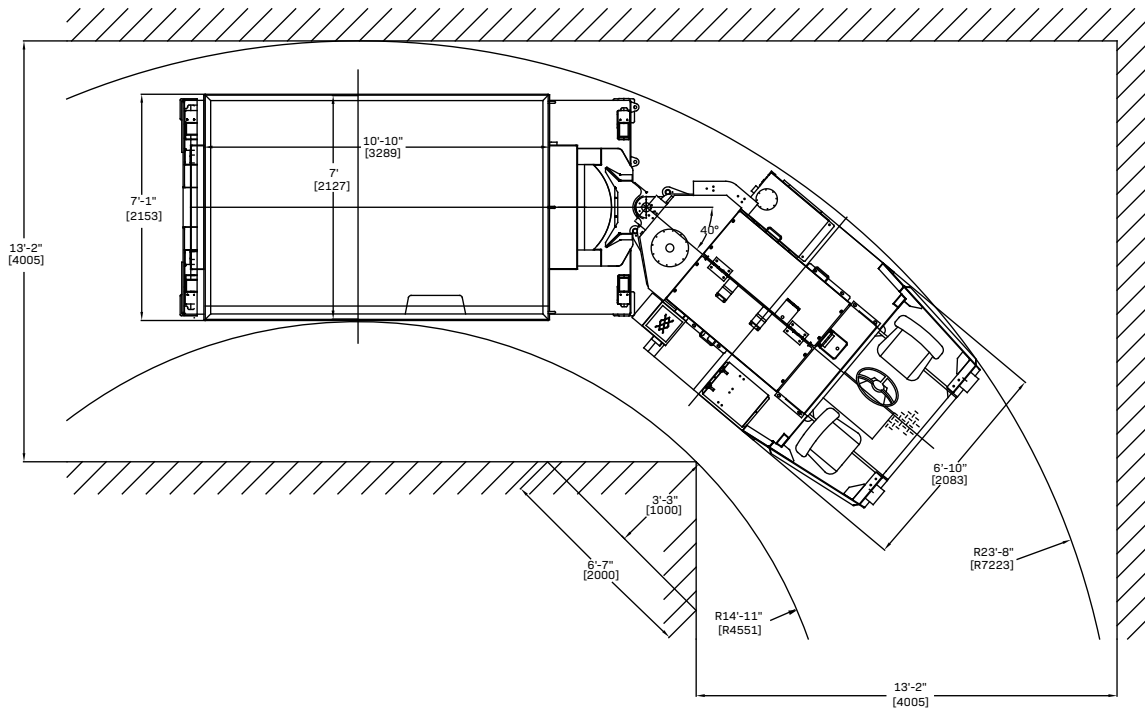


*May be shown with optional equipment

FRONT ENTRY DIMENSIONS AND MANEUVERABILITY



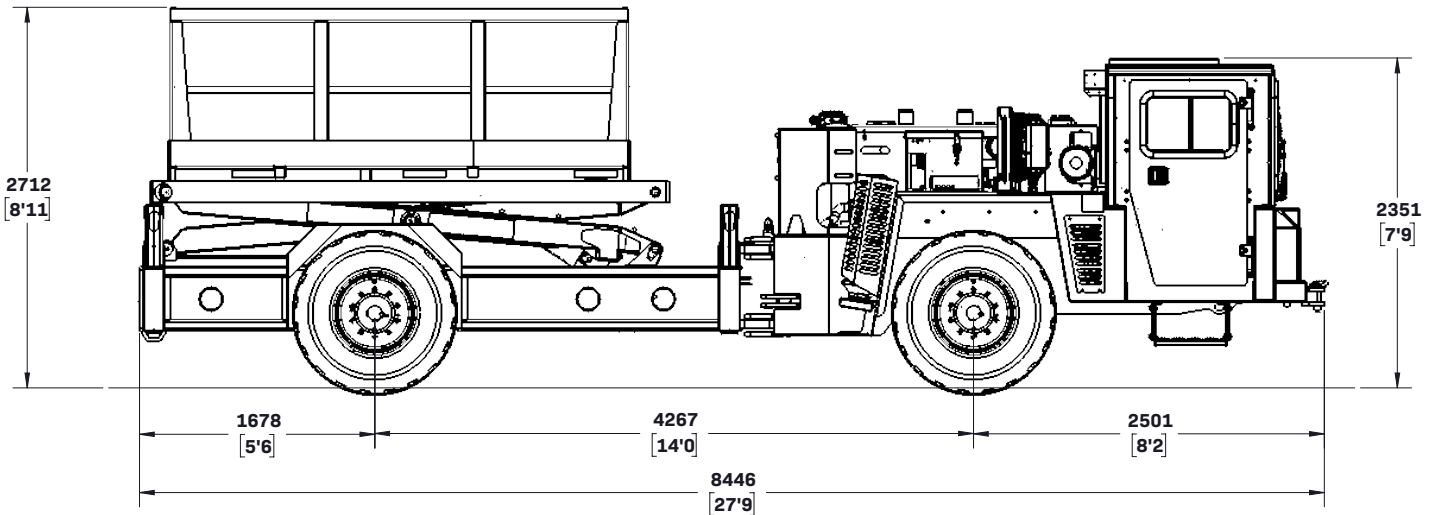
MACHINE LENGTH	7868 mm	310 in
WHEELBASE LENGTH	4267 mm	168 in
GROUND CLEARANCE	311 mm	12.25 in
MACHINE HEIGHT (Canopy)	2307 mm	91 in
MACHINE HEIGHT (Platform)	2505 mm	96 in



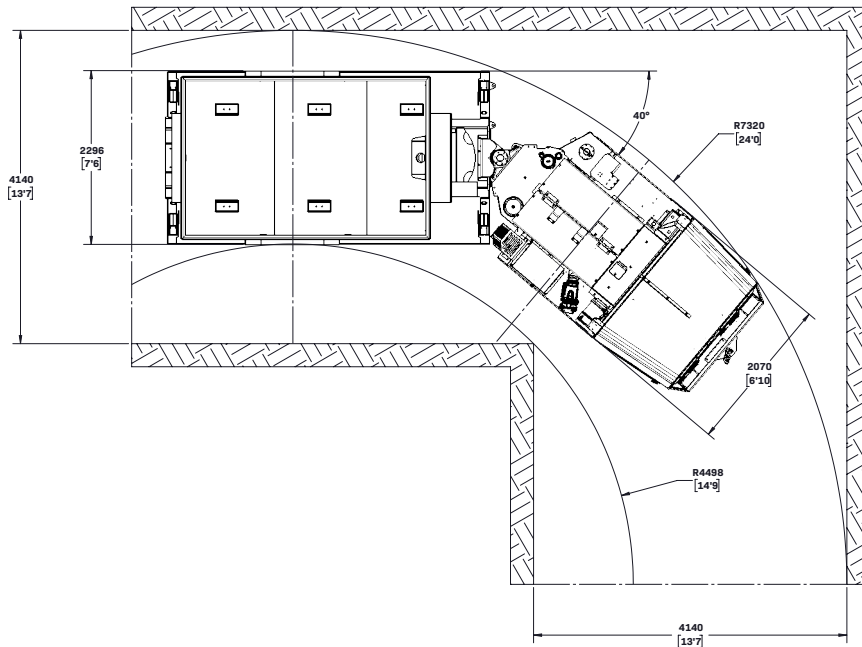
MACHINE WIDTH	2153 mm	85 in
PLATFORM WIDTH	2127 mm	84 in
PLATFORM LENGTH	3289 mm	132 in
INNER TURNING RADIUS	4551 mm	179 in
OUTER TURNING RADIUS	7223 mm	284 in

*May be shown with optional equipment

SIDE ENTRY DIMENSIONS AND MANEUVERABILITY



MACHINE LENGTH	8446 mm	333 in
WHEELBASE LENGTH	4267 mm	168 in
GROUND CLEARANCE (S41 Axles)	311 mm	12.25 in
MACHINE HEIGHT (Canopy)	2351 mm	93 in
MACHINE HEIGHT (Platform)	2712 mm	107 in



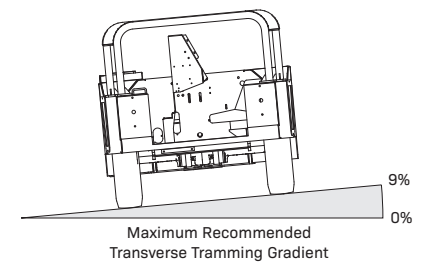
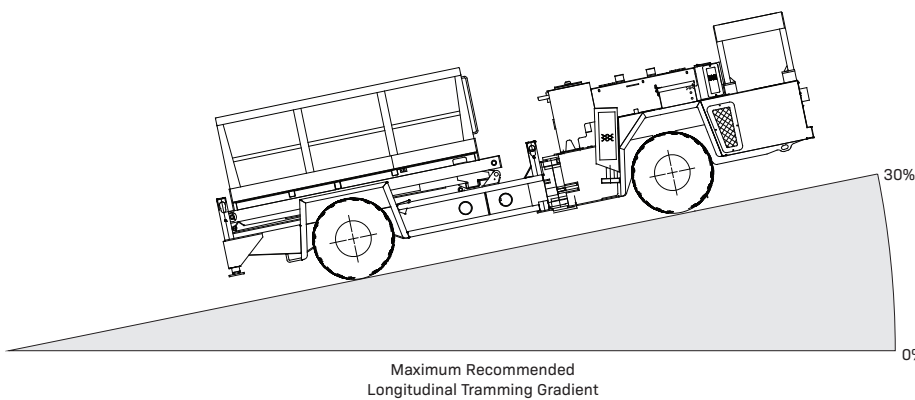
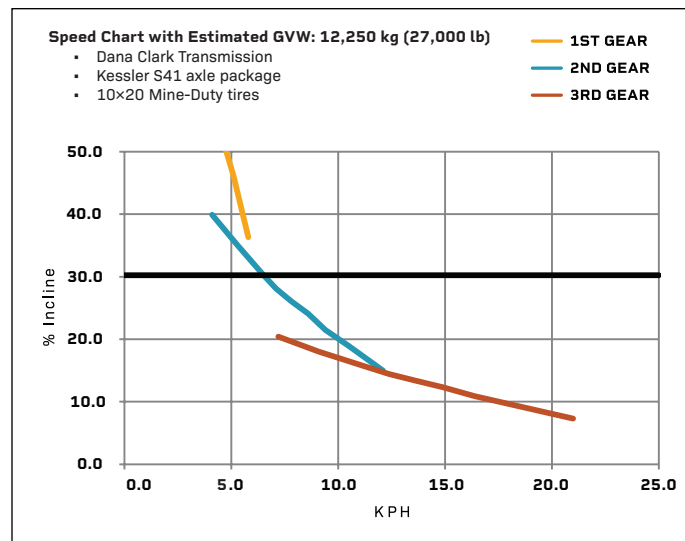
MACHINE WIDTH	2070 mm	82 in
PLATFORM WIDTH	2296 mm	90 in
PLATFORM LENGTH	3289 mm	132 in
INNER TURNING RADIUS	4498 mm	177 in
OUTER TURNING RADIUS	7320 mm	288 in

*May be shown with optional equipment

ENGINE AND PERFORMANCE

CUMMINS QSB4.5 ENGINE PACKAGE

MANUFACTURER	Cummins
MODEL	QSB4.5
STAGE	Tier III
DESIGN	4 Cylinders in line, water cooled
MAX POWER	127 kW (170 hp) @ 2200 rpm
EXHAUST SYSTEM	Catalytic exhaust conditioner and silencer
ASPIRATION	Turbocharged
FUEL CONSUMPTION	243 g/kW-hr (0.399 lb/hp-hr)





ABOUT GETMAN CORPORATION

Getman Corporation is a global supplier of mobile equipment to the mining industry, offering customer-specific solutions to underground mines in the production and production support classes of equipment. All Getman equipment is designed with extensive research and development and is supported by over seventy years of experience in serving the underground mining industry.

Through our network of distributors we sell and support our products on six continents, offering exceptional product solutions and following up with world class aftermarket support. At Getman Corporation, designing and building vehicles for the underground mining industry is what we do. We take pride in being the preferred supplier of underground production and

production support equipment to miners globally by offering customer-specific, value-driven and long-lasting solutions. For more information contact your Getman distributor or email us at info@getman.com, or visit our website at getman.com.

For parts or service support, email us at parts@getman.com or service@getman.com.

Getman Corporation assembled this datasheet with the intention of passing along the most accurate information possible, however this document shall not be binding in any way and shall be considered informational only. All values stated herein are theoretical in nature. All orders are accepted based on the terms and conditions set forth in the individual purchase or sales agreement. Getman reserves the right to make changes to the specification herein at any time and without further notification.

Pictured machines in this document may contain optional and additional equipment.

GETMAN

GETMAN CORPORATION
59750 34th Avenue
Bangor, MI 49013 USA

Tel +1 (269) 427-5611
info@getman.com
getman.com