

PURPOSE-BUILT MINING EQUIPMENT



GETMAN SERIES 12 TELEHANDLER machines are now part of the company's comprehensive fleet of utility equipment. With a broad range of reach and lift capabilities, telehandlers meet the underground mining sector's ongoing need for material transport.

Getman Telehandlers are defined by their rugged design and reliability. They feature superior machine and boom stability, are flexible and agile, and offer good visibility for greater safety. With appropriate engine options

and enhancements to improve operator comfort and efficiency, the telehandler is an appealing complement to Getman's fleet of utility and purpose driven products.

The Getman Telehandler Series delivers the quality and durability expected with the Getman brand, all backed by a wide-reaching support and service network that is critical to sustaining productive underground mining operations.



TECHNICAL SPECIFICATIONS

ENGINE

- T4F 87 kW (117 HP) Cummins® turbo diesel with DOC muffler
- Optional MSHA/CANMET approved T3 89 kW (120 HP) Deutz®
- 113 L (30 gal) fuel tank
- Engine block heater

TRANSMISSION

- Dana® VDT12000 Series transmission
- Three speed Powershift, forward and reverse
- 4-wheel drive

AXLES

- Dana 212 Series: 45% limited slip front differential

TIRES

- Directional lug, pneumatic tire
- 13.00 x 24

BRAKE SYSTEM

- Oil-immersed inboard disc service brakes
- Integral front SAHR park brake

STEERING

- Steering wheel with integrated horn and steering knob
- 4-wheel power steering with 3 steering modes:
 - 2-wheel front
 - 4-wheel
 - 4-wheel crab

BOOM

- 3-section
- Automatic fork leveling
- Boom angle indicator
- Single multi-function joystick for boom controls

HYDRAULIC SYSTEM

- Pressure comp, axial piston pump
- Fully proportional functions
- Auxiliary boom tip hydraulics
- Quick disconnect for attachments
- Single joystick controls, pilot operated

FRAME

- Hydraulic frame leveling (+/- 10° right and left)
- Rear axle stabilization system

OPERATOR COMPARTMENT

- Adjustable suspension seat with seat belt
- 3-point contact to enter/exit cab
- Analog/LCD gauge cluster with warning lights
- Open cab, half door design
- Cab-side mirror
- Lockable storage area under seat

ELECTRICAL

- 12V Electrical system; 1x E-Stop in cab
- Electrical master switch, lockable
- LED lighting package
 - Low beam/high beam front headlight switch
 - 2x tail/brake light
 - Turn signals integrated into front/rear headlights
- LED Strobe light; one each side of rear carriage

GENERAL EQUIPMENT

- Audio backup alarm
- 1829 mm (72 in) carriage
- 1219 mm (48 in) fork tines
- Sling hook
- Fire extinguisher
- Wheel chocks
- Diagnostic test ports for steering and brakes

DIMENSIONS

- Overall Height - 274 cm (9 ft) boom down
- Fork Carriage - 122 cm (48 in) standard
- Ground Clearance - 48 cm (19 in)
- Overall Length - 699 cm (22 ft 11 in) to fork frame
- Overall Width - 259 cm (8 ft 6 in)
- Pallet Forks - 5.7 x 10 x 122 cm (2.25 x 4 x 48 in) standard
- Approximate Operating Weight - 13,268 kg (29,250 lbs)

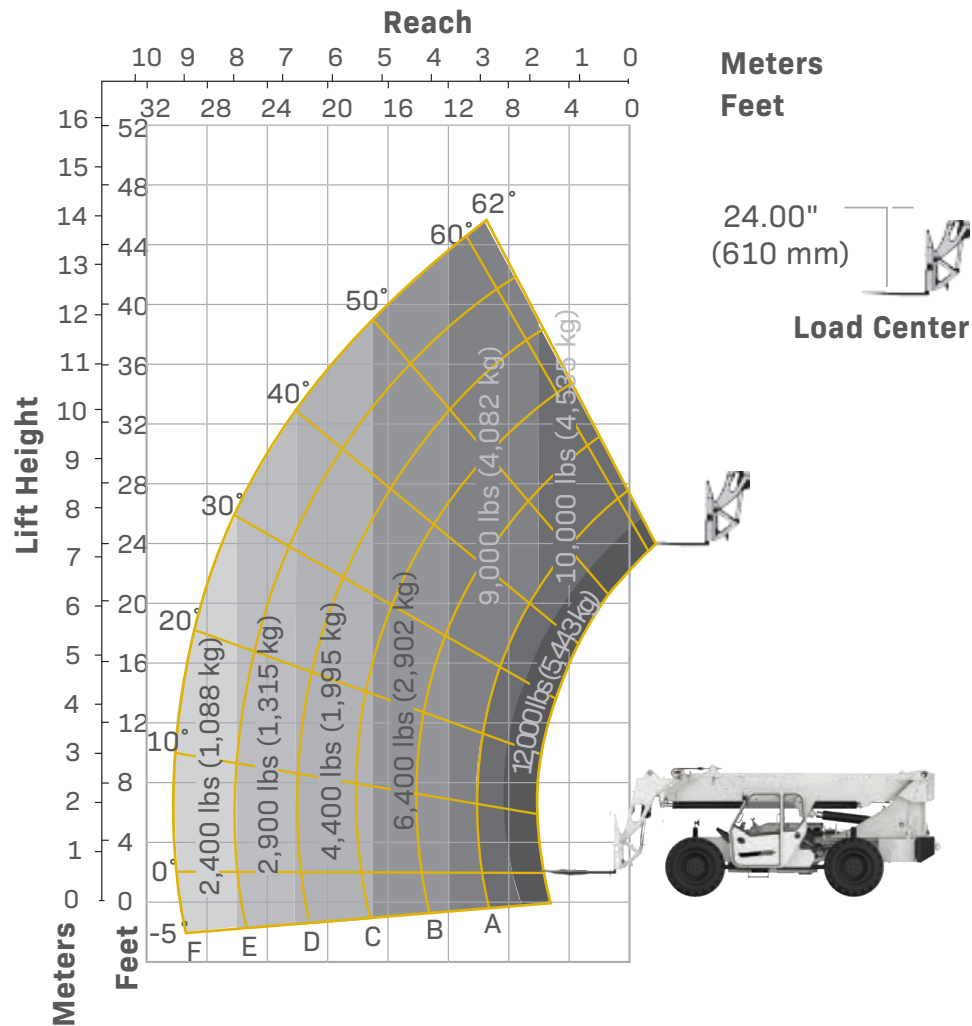
PERFORMANCE

- Maximum Load Capacity - 5,443 kg (12,000 lbs)
- Maximum Lift Height - 1,417 cm (46 ft 6 in)
- Landing Height - 1,280 cm (42 ft)
- Maximum Forward Reach - 915 cm (30 ft) at 24 in LC
- Below Grade Reach - 97 cm (3 ft 2 in)
- Maximum Travel Speed - 24.5 km/h (15.2 mph)
- Turning Radius - 437cm (14 ft 4 in)
- Drawbar Pull (GVW) - 12,973 kg (28,600 lbs)

OPTIONAL

- Premium gauge cluster with upgraded digital display and integrated rear-view camera
- Solid or foam filled tires
- Various tire tread options
- Fire suppression system
- Enclosed cab, HWD (A/C available)
- Fenders (Set of 4)
- Cab and boom-side mirrors
- 1829 mm (72 in) fork tines
- Side tilt carriage (+/- 10°)
- Load status indicator

LIFT PERFORMANCE





ABOUT GETMAN CORPORATION

Getman Corporation is a global supplier of mobile equipment to the mining industry, offering customer-specific solutions to underground mines in the production and production support classes of equipment. All Getman equipment is designed with extensive research and development and is supported by over seventy years of experience in serving the underground mining industry.

Through our network of distributors we sell and support our products on six continents, offering exceptional product solutions and following up with world class aftermarket support. At Getman Corporation, designing and building vehicles for the underground mining industry is what we do. We take pride in being the preferred supplier of underground production and

production support equipment to miners globally by offering customer-specific, value-driven and long-lasting solutions. For more information contact your Getman distributor or email us at info@getman.com, or visit our website at getman.com.

For parts or service support, email us at parts@getman.com or service@getman.com.

Getman Corporation assembled this datasheet with the intention of passing along the most accurate information possible, however this document shall not be binding in any way and shall be considered informational only. All values stated herein are theoretical in nature. All orders are accepted based on the terms and conditions set forth in the individual purchase or sales agreement. Getman reserves the right to make changes to the specification herein at any time and without further notification.

Pictured machines in this document may contain optional and additional equipment.

GETMAN

GETMAN CORPORATION
59750 34th Avenue
Bangor, MI 49013 USA

Tel +1 (269) 427-5611
info@getman.com
getman.com